

carts, trolleys + workstation



## lupo cart

all-in-one 4  
transport/installation/  
handling

# key features

- all-in-one transportation and installation cart

---

- mobile and multi-functional lifting/handling unit

---

- easy lifting, handling, and maneuvering

---

- individual, customized load take-up fixtures

---

- integrated scissor lift module enabling additional height adjustments and modifications

---

- modularly configurable system for great variety of applications

---

- individually adaptable to most various requirements/applications with different fixtures (cold test cover EVOLUTION, combo checker tool, various DUT boards and docking plates – please refer to “applications” below)

---

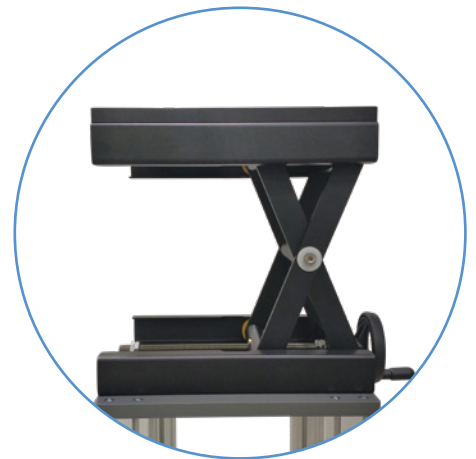
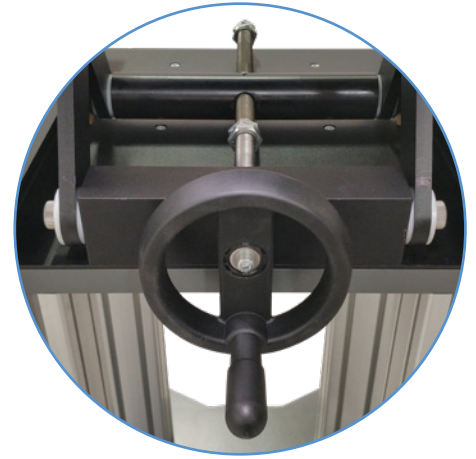
- customised heights of cart possible on demand

---

- excellent for various overhead, horizontal installation, alignment, and product maintenance tasks

---

- quick and easy exchange of carrier assemblies



# applications

- esmo semicon cold test cover EVOLUTION

---

- esmo semicon combo checker tool

---

- esmo semicon cam-dock

---

- esmo semicon dib-changing system

---

- esmo semicon helix docking

---

- esmo semicon udp

---

- esmo semicon load board stiffener



**S2/S8**  
compliance

<p><b>esmo Europe Rosenheim</b></p> <p>esmo AG Brueckenstrasse 1 83022 Rosenheim Germany</p> <p>P +49 (8031) 233 88 0 F +49 (8031) 233 88 10 sales@esmo-ag.com</p>	<p><b>esmo USA Sacramento</b></p> <p>esmo USA Corp. 1020 Winding Creek Road Suite #120 Roseville, California 95678 USA</p> <p>P +1 (916) 307 6345 F +1 (916) 307 6341 sales@esmo-usa.com</p>	<p><b>esmo Asia Singapore</b></p> <p>esmo Asia Pte. Ltd. 115 Eunos Avenue 3 #05-03 Singapore 409839 Singapore</p> <p>P +65 (656) 288 57 F +65 (656) 288 60 sales@esmo-asia.com</p>	<p><b>esmo China Shanghai</b></p> <p>esmo Asia North Co. Ltd. Building 5-6 N. 388 Xin Run Rd. Xin Qiao Industrial Zone Song Jiang District 201612 Shanghai · China</p> <p>P +86 (21) 5768 7228 + ex. 201 F +86 (21) 5768 7132 info@esmo-ag.com.cn</p>	<p><b>esmo Taiwan Zhubei</b></p> <p>esmo TW Ltd. Co. 9F., No. 247, Dong Sec. 1, Guangming 6th Rd., Zhubei City · Hsinchu County 302044 · Taiwan (R.O.C.)</p> <p>M +886 932-290-662 M +886-988-313-705 sales@esmo-asia.com</p>
--	--	--	---	---