

engineering innovations
worldwide



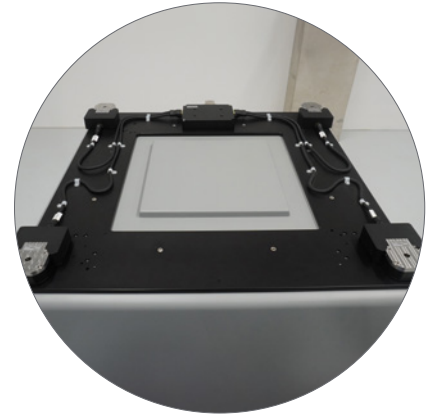
adjustable
software
controlled
z-stack

helix-e
automated docking unit



mechanical design

- four (4) modules mounted on a rigid base plate
- four (4) guide bushings for pre-alignment
- two versions available:
helix-e 30 with 30 kgf (294 N – total: 1176 N) contact force per module
helix-e 150 with 150 kgf (1960 N – total: 5880 N) contact force per module
- maximum system stability
- compatibility with most common test head types used in the field
- simple and efficient installation
- installation without the need for an alignment jig for most applications



functional features

- adjustable z-stack, modules synced electrically
- individual z-position measurement on each module
- teach-in capability for z stop position
- parallel alignment relative to the handler
- fine adjustment of the docking stop position while in the docked state (no undocking required)
- optional implementation of a mechanical hard stop



performance + technical data

parameter	helix-e 30	helix-e 150
locking force (per module)	30 kgf (≈ 294 N)	150 kgf (≈ 1470 N)
total locking force (4 modules)	120 kgf (≈ 1176 N)	600 kgf (≈ 5880 N)
dock adjustment range	0.0~5.0 mm	0.0~6.5 mm
dock time	< 18 sec.	< 12 sec.
docking accuracy	± 0.05 mm	
repeatability (x, y)	± 0.05 mm	
repeatability (z)	± 0.02 mm (software-controlled) ± 0.01 mm (hard stop)	



esmo Europe Rosenheim

esmo AG
Brueckenstrasse 1
83022 Rosenheim
Germany

P +49 (8031) 233 88 0
F +49 (8031) 233 88 10

sales@esmo-ag.com

esmo USA California

esmo USA Corp.
1020 Winding Creek Road
Suite #120
Roseville | CA 95678
USA

P +1 (916) 307 6345
F +1 (916) 307 6341

sales@esmo-usa.com

esmo Asia Singapore

esmo Asia Pte. Ltd.
15 Tai Seng Drive
#01-02
Singapore 535220
Singapore

P +65 (656) 288 57
F +65 (656) 288 60

sales@esmo-asia.com

esmo China Shanghai

esmo Asia North Co. Ltd.
Building 5-6 N. 388 Xin Run Rd.
Xin Qiao Industrial Zone
Song Jiang District
201612 Shanghai · China

P +86 (21) 5768 7228 + ex. 201
F +86 (21) 5768 7132

info@esmo-ag.com.cn

esmo Taiwan Zhubei

esmo TW Ltd. Co.
9F-1, No. 3,
Huanke 1st Rd.
Zhubei City, Hsinchu County
302047 Taiwan (R.O.C.)

M +886 932-290-662
M +886-988-313-705

sales@esmo-asia.com